



***To travel is to live***



"To travel is to live" (Hans Christian Andersen, Danish Poet, 1805-1875).

... and of he went with trunks of heavy luggage. In these days travelling meant horse carriages, and servants eager to carry the heavy luggage, so heavy luggage wasn't an issue.

Later came the ocean liners and trains and still you could travel with almost unlimited luggage. Weight was not a problem, partly because the carriers were not concerned about the weight and partly because there were always porters available to carry the luggage for the exhausted traveller.

Things have changed since then. Today most travellers go by air and for the airlines weight is certainly a consideration. Fuel consumption is directly linked to the amount of weight to be transported. Hence weight has become a cost issue.

Most airlines have limited the weight of the luggage a passenger can bring along.

In Europe an economy seat passenger can usually bring 20 kg of luggage. In the United States the limit is somewhat higher, but still restricted. If the weight limit is exceeded, the passenger stands to pay a heavy extra overweight charge, which may considerably add to the price of the journey.

The 20 kg (or any other number applicable) weight limit includes the weight of the suitcase, hence the lighter the suitcase, the more items can be brought along. Creating a light suitcase is therefore an objective. However strengths and protection of the items inside the suit-



Hans Christian Andersen

case is also an objective – an objective which may at times be conflicting with the weight objective.

We all know the situation, where we have to go some where and we fear that the luggage is too heavy to be within the allowed limits. To know the exact weight we find a bathroom scale, steps onto the scale, note the weight and once again steps onto the scale, this time carrying the luggage. A simple calculation then gives the weight of the luggage. So far so good, but it is complicated and what do you do if you are in a hotel room without a bathroom scale.

The solution is obvious and simple, but in spite hereof the suitcase with a built-in scale was never created to date.

My intention is to design a suitcase which meets the following objectives:

- Strong and durable
- Protective for the items inside
- Light

With a built-in scale which easily gives the weight of the luggage.

The built-in scale is envisaged to be a part of the handle and the weight to be displayed on a LCD display. When the luggage is lifted, the weight is displayed.

Because I believe that the design concept is innovative and unique, I intend to consult a patent bureau to ensure that the idea is protected from being copied unauthorised.



Most practically a suitcase should be boxy to make sure to pack an airplane most practically

**Different airlines different weights**

|                 |                                       |
|-----------------|---------------------------------------|
| British airways | 23 kg                                 |
| EasyJet         | 20 kg                                 |
| Ryanair         | 15 kg and a very expensive overweight |

Most Airlines allow 20 kg





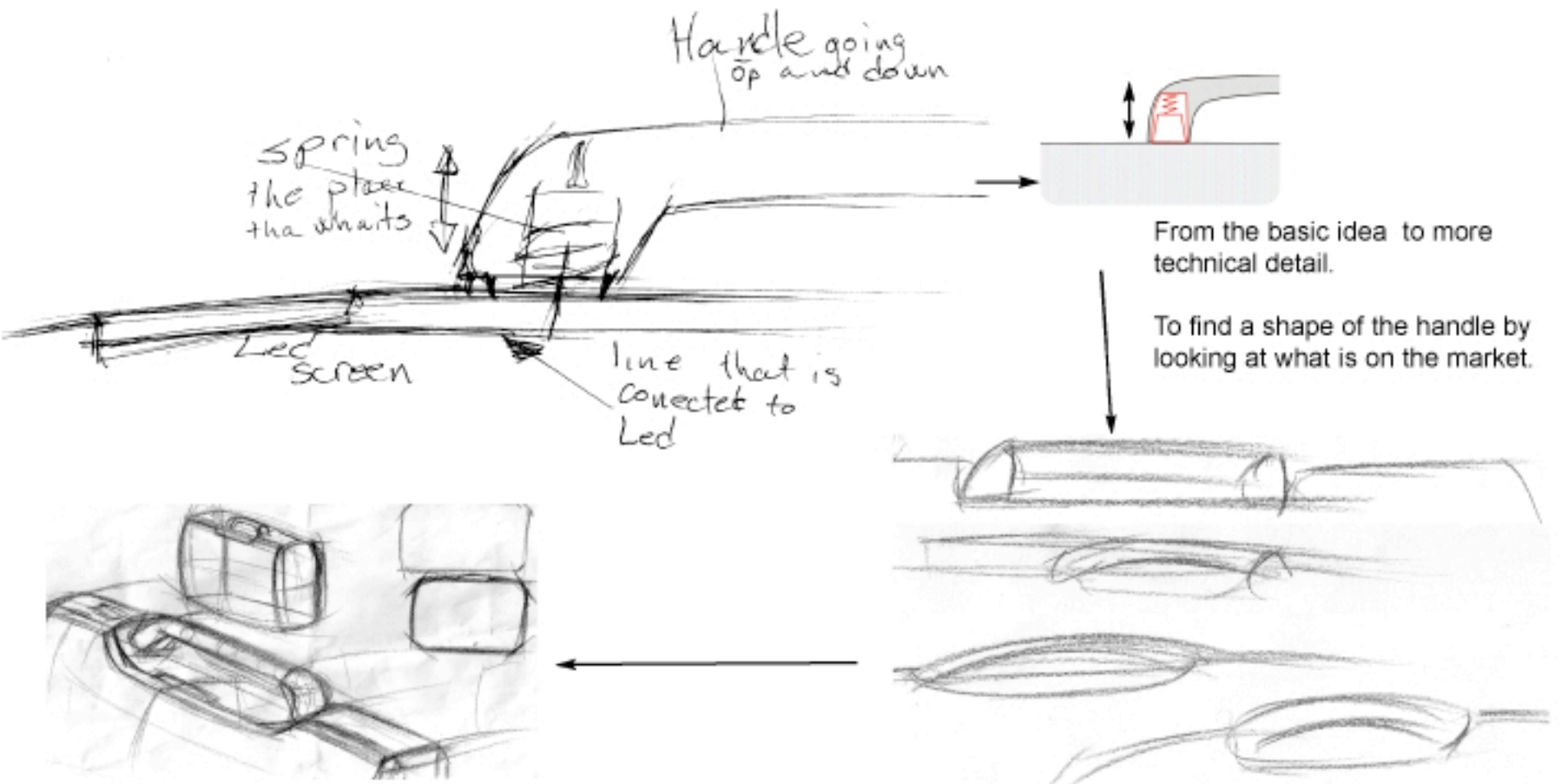
**Students who study abroad.**

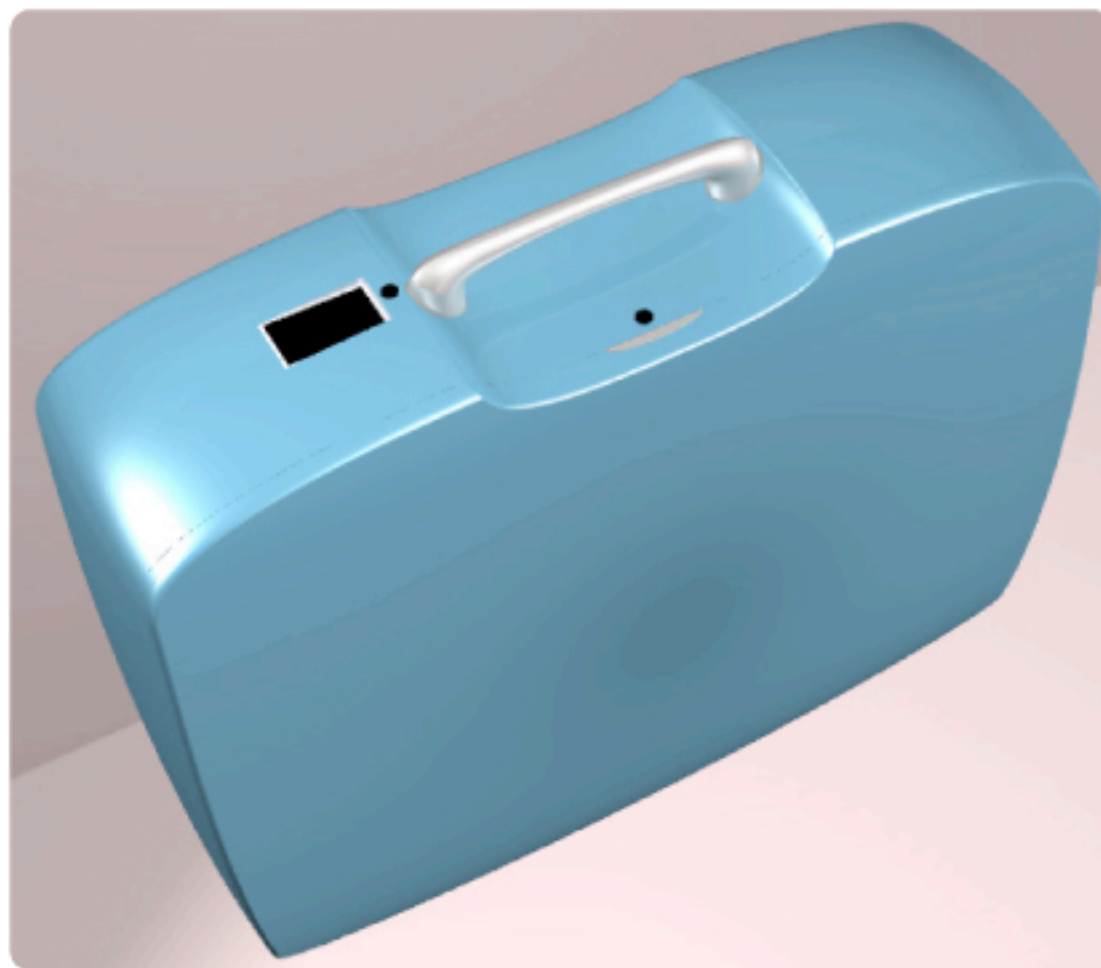
**Tourist who bring home too many souvenirs.**

**Low cost airline customers.**

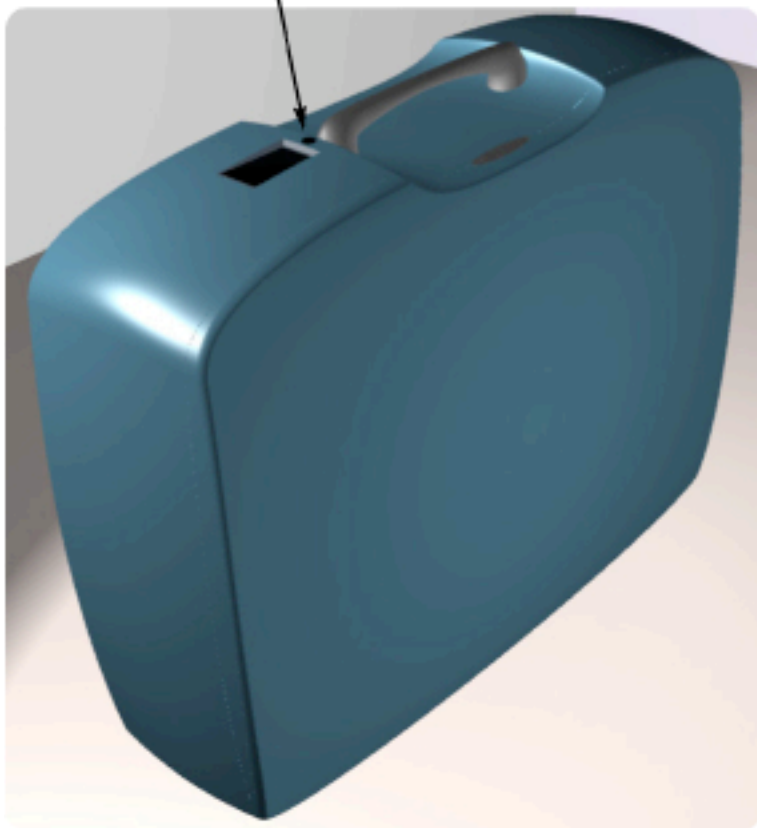
**Generally people who would like to avoid paying overweight.**







Keybotton to activate the wheight handle and the lcd display will be active.

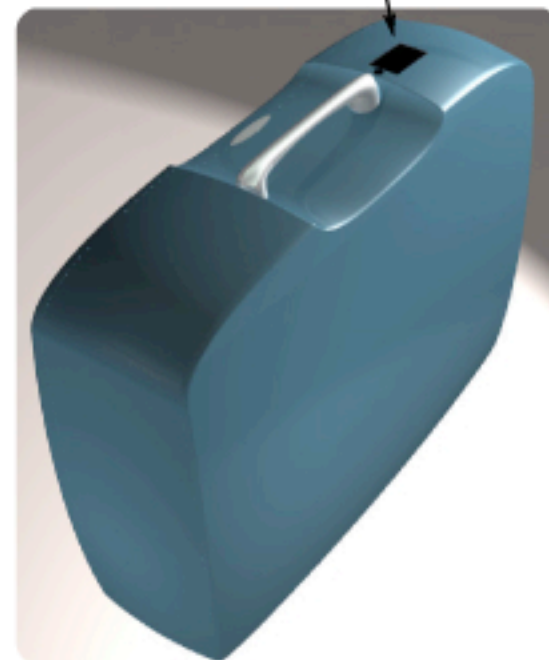


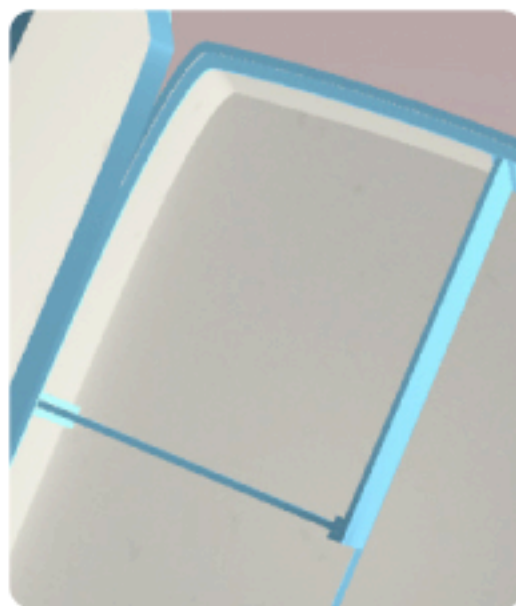
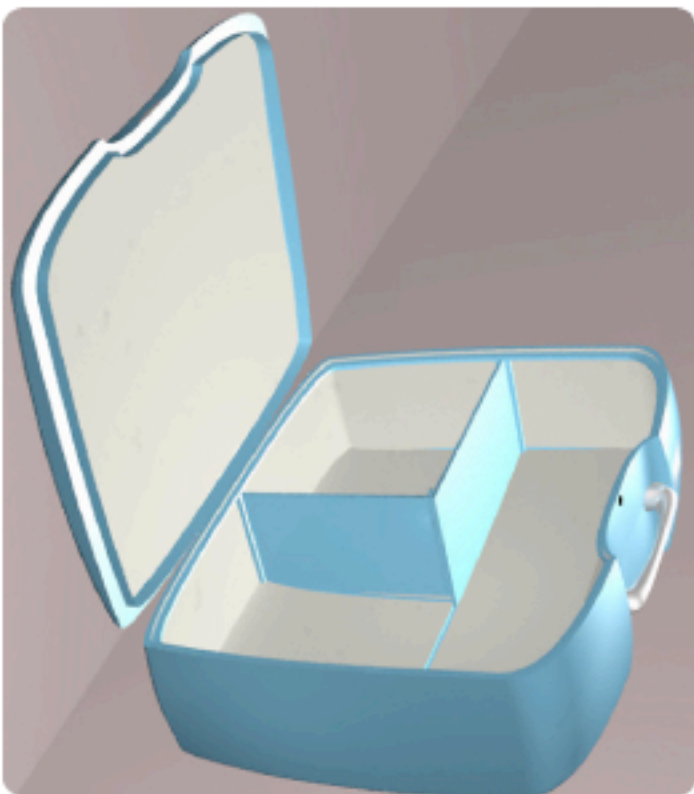
Material used light plastic  
Polycarbonate/ABS



Key lock to open the suitcase.

Lcd display with electronic text backlight

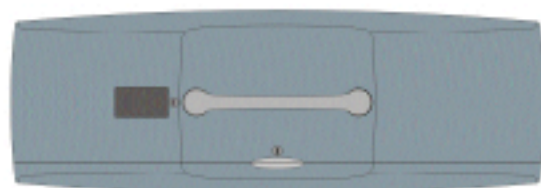




Sometimes you need to separate things in the suitcase or you have a few items with you and you do not want to have rolling around in the suitcase, therefore I have added some removeable walls and tracks to the inside of the case.







Measurements

High 568 mm  
Length 705 mm  
Wide 248.9 mm

